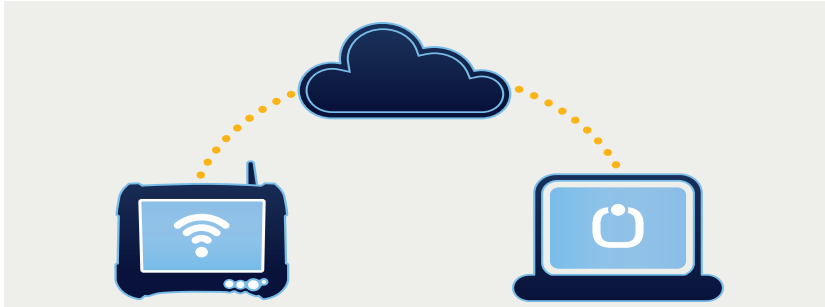


Omni AT (Asset Track)



Overview

Omni AT is an auto-identification software engine which enables the identification and tracking of assets through the business process. Offered with an integrated mobile client application, the Asset Track Server is a powerful, scalable platform for asset management in any size business.

Asset Track software is used to capture and track the unique ID of assets in a wide range of industries including; Manufacturing, Health Care, Oil & Gas, and Construction.

Built specifically for use with RFID Systems, Omni AT enables commissioning of an asset management application which also includes the definition of zones or locations, asset types or categories, asset groups and unique member ID's.

Benefits

- Reduced inventory time.
- Achieve real-time physical inventory of assets.
- Quickly locate critical equipment.
- Receive timely information for decision making.
- Improved security.
- Support for Active, Passive, and BAP to capture locations, categories and asset groups.
- Dynamically configure location identification types.
- Asset types can be defined and nested.
- Nested locations and types allow simplicity and ease of use in reporting.
- Generate web-based user reports.
- Real-time reporting optimizes customer operations and timely decisions.
- Standard reports can be saved or exported.
- Custom reports can be defined by the administrator in the Enterprise version of Asset Track

System Requirements

Component	Requirements
Operating System	64bit and 32bit Windows 7 and Windows Server 2008 R2
Supported Fixed Readers*	Impinj
Supported Handheld Readers*	Motorola MC9090-Z and Motorola MC9190-Z
Computer & Processor	2GB or more RAM, an Intel Core i3 or better processor or equivalent to AMD

* Additional supported Readers are anticipated following distribution of this document. Please contact Omni-ID sales for current supported Readers.

System Components

Product Name	Description
OMNI Asset Track Mobile (ATM)	Mobile application in an unconnected mode. Operates off an image of the database and syncs data with any network connection, docked in a Portsmouth cradle, or with a host PC with Network Connection
OMNI Adapter	USB peripheral device to plug into a PC, providing a radio link to manage tags
OMNI Server	ProVIEW server with Integrated SQL database & software CD or download
OMNI View 3	Visual Tag Display 2.6" diagonal screen
OMNI View 4	Visual Tag Display 4.3" diagonal screen

Software Options

Omni ATM (Asset Track Mobile)

Handheld application that syncs its on-board database with the Asset Track Server database.

Hosted vs Local

A Cloud hosting option with a secure login and data purchased as a 2 year lease by number of assets. A local option allows users to purchase a server to support RFID and visual tagging.

Maintenance Package

Package includes phone support, license key transfer, and automatic notifications of upgrades and fixes.

Technical Support

Call: +1 (585) 713-1000 or Email: support@omni-id.com

Omni AT (Asset Track) Features

Assign Users & Types

Maintenance Admin:

Configures the system, maintains database and creates users.

Operation Admin:

Adds & edits assets, locations, documents, events and operations.

Power User:

Creates the workflow and designs and generates reports.

User:

Views the AT Server application and has limited edit privileges.

Create Lists of Assets

This feature allows a system administrator to create one or more lists of grouped assets in the system which is transferred to handhelds running Asset Track Mobile. The handheld operator is then able to perform an inventory scan at the site of a delivery for the assets in a particular Pick List. It is then verified that each asset within a Pick List has been successfully received at its intended location.

Asset Types

Asset types can be defined and nested just as locations. This allows simplicity and ease of use in reporting and inventory of like objects. Dynamic attributes for asset types can be defined and inherited as you define your asset base. EPC fields can be encoded in our tags directly from the server or handheld.

Locations and Nested locations

This feature identifies the locations where assets can reside. Locations can be Nested under each other by using the *nest under* feature. All nested locations can be found by clicking the arrow to the left of the location name expanding into the list of nested locations.

Track & Report

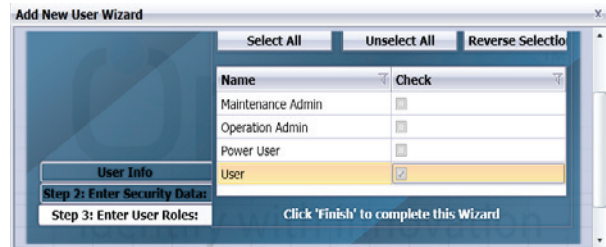
Quickly generate reports based on the following:

- List of assets by type
- Asset to location
- List of users, assets or locations
- Maintenance history

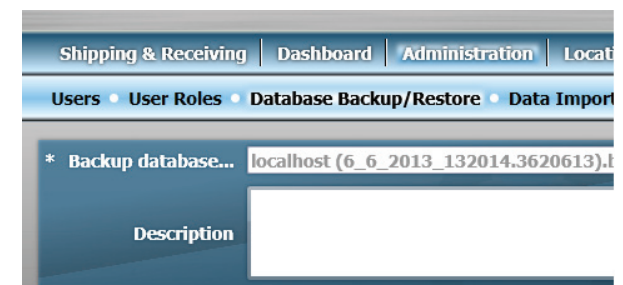
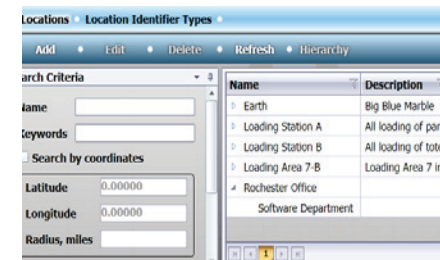
Database Backup/Restore

Maintenance Admin has the ability to restore and create database backups. Click Database Backup/Restore, name the backup and click backup button. All past Backups will appear in the table and can be viewed, deleted or restored by the admin.

Assign User Role and Security



**ATM
(Asset Track Mobile)**



Omni-ID office locations: US | UK | China | India | Southeast Asia
For product or technology inquiries email: support@omni-id.com