



Lighted Button Accessory

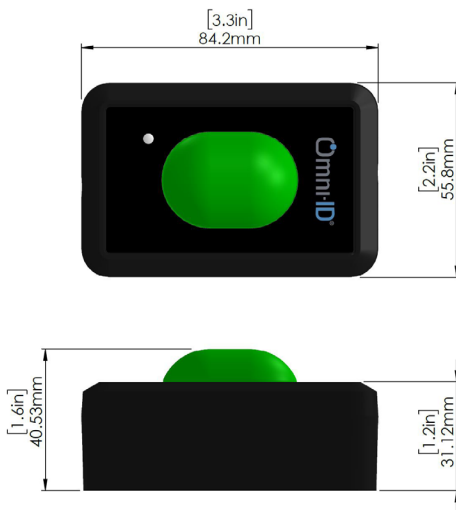
The Lighted Button Accessory is the perfect complement to Omni-ID's View 3 and View 4 visual tags. Designed for applications that require increased visibility and enhanced user input, this accessory combines a high brightness LED with a large, easily activated button.

Applications

The Omni-ID Lighted Button is ideal for any application requiring high visibility signaling and/or quick and easy user input such as:

- ▶ Batch picking
- ▶ Sequence picking

Dimensions



Dimensions stated in mm.

Physical Specifications

Size (mm)	84.2 x 55.8 x 31.1 (40.5 includes button)
Size (in)	3.3 x 2.2 x 1.2 (1.6 includes button)
Weight (g)	80 (without batteries)
Construction	Enclosure: ABS Button: Polycarbonate
Attachment	Vertical or horizontal mounting via screws or adhesive
Interface Cable	300 mm length 3.5 mm audio plug (button interface) 4 pin Molex connector (tag interface)

Operating Specifications

Operating Modes	Configurable for either steady on or pulsed operation
Battery	3 AA cells (not included)
Battery Life ¹	Steady: 1 year Pulsed: 10 years
Button Life	5 million actuations
Storage Temperature	-20 to +60 °C
Operating Temperature	0 to +40 °C
Warranty	1 year

¹ assumes 2 hour on-time every 24 hours.

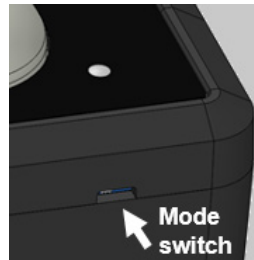
Powerful Features:

- ▶ Battery powered for ease of configuration - no hardwired power lines to run
- ▶ Dual modes for maximizing visibility and battery life
- ▶ Low-Battery indicator for easy maintenance



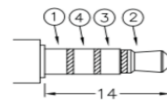
Operating Mode

- The Accessory supports two operating modes:
 - ▶ Steady on when activated
 - ▶ Pulsing at ~1.5 Hz
- Use of the Pulsed mode will increase battery life tenfold
- Mode is set by position of recessed switch on the side of the device



Interface Cable Connections

- The included interface cable uses a standard 3.5 mm audio connector to attach to the Accessory.



Pin	Name	Signal	Details
1	Sleeve	-	-
2	Tip	OUT	Active low button press
3	Ring 1	IN	Active low LED enable
4	Ring 2	GND	Common ground

Low-Battery Indicator

- A small red LED will pulse when the battery voltage is low and the Light is activated to highlight the need for battery replacement.
- Light will continue to operate for approximately one month (at normal use case) after the indicator first actuates.



- The four pin connector attaches to the AUX port on the back of the View tag.



Pin	Signal	Color
1	OUT	white
2	IN	blue
3	GND	green
4	GND	N/C

Related Products

OMNI-V3	View 3 Visual Display Tag
OMNI-V4	View 4 Visual Display Tag
OMNI-NGW	Link Network Gateway (Ethernet)
OMNI-MGW	Link Mobile Gateway (USB/Bluetooth)

Ordering Information

OMNI-VIEW-LBA	View Tag Lighted Button Accessory with 300 mm cable
---------------	---

Omni-ID office locations: **US | UK | China | India | Germany**
 For product or technology inquiries email: sales@omni-id.com